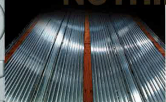


Reitnouer trailers boast many exclusive innovations. But what really makes our trailers stand out is that every Reitnouer aluminum trailer is bolted. With the exception of the rub rail, there's not a welded aluminum joint anywhere on a Reitnouer. Research and experience shows that when a heat treated aluminum alloy is welded, the intense heat required to weld the joint significantly reduces the aluminum's tensile strength. As a result, bolting makes Reitnouer flatbed trailers stronger and more durable.

Engineered for long life, Reitnouer trailers have a rock-solid design proven over millions of miles. Reitnouer continues to revolutionize the industry and maintain its standards by which all other trailers are measured. Reitnouer will uphold its tradition of leadership and innovation to continue providing our customers with stronger, lighter trailers.

# NOTHING WORKS AS HARD AS A REITNOUER.



Standard three wood nailers offer the versatility you need to properly secure loads.



Optional four wood nailers or four wood nailers with a center tie-down track is the setup for hauling coils or other loads where additional wood or tie-downs are needed.



Three-piece floating outriggers minimize the stress on the main beams.



Suspension hanger boxes are boxed in from side-to-side to minimize the stresses that are transferred to the main rails.



Two-piece load levers for drop decks offer lighter weight handling and placement anywhere along the trailer deck.



Snap-in pockets offer superior strength in the pocket-to-side-rail connection.



Optional log pockets enable use of heavy duty stakes to secure logs. The number of pockets and pocket locations can be tailored to customer specifications.



An innovative snap-in floor enables the floor to become part of the main beam. In addition, the extruded inner flange allows cross member stress to be distributed over a much larger area.



Solid one-piece cross members are designed with an offset web and a unique, reinforced inner extrusion that adds reinforcement between the main beams.



Patented coil blocks offer more portability and ease of storage, but still offer the "locked in" safety of larger solid coil racks.



Moveable, removable tie-downs now come in various lengths and cut-outs to satisfy your requirements.



We sell our quality trailers at prices our customers can afford. If you want the best trailer at an affordable price, accept no limitations and rely on the name that delivers quality, durability and strength. Reitnouer Aluminum Trailers.

For more information, see your authorized Reitnouer dealer or visit [www.reitnouer-trailers.com](http://www.reitnouer-trailers.com).