

FLATBEDS



DIMENSIONS

LENGTH	Customer Spec. (Min. 34', Max. 52'6")	COUPLER HEIGHT	Customer Spec. (Min. 46", Max. 52")
WIDTH	Standard 102" Overall	KING PIN	Customer Spec. (Min. 18", Max. 42")
GOOSENECK WEB DEPTH	Standard 9 1/2"; 7 1/2" and 8 1/2" Options Available		
SUSPENSIONS	Tandem Fixed, Tandem with Front or Rear Sliding Axle, Tandem Full Sliding, Tri-Axle Fixed, Tri-Axle Full Sliding, Quad Steerable Ontario SPIF, West Coast Quad		

DROP DECKS



DIMENSIONS

LENGTH	Customer Spec. (Min. 34', Max. 52'6")	COUPLER HEIGHT	Customer Spec. (Min. 46", Max. 52")
WIDTH	Standard 102" Overall	KING PIN	Customer Spec. (Min. 18", Max. 42")
GOOSENECK WEB DEPTH	Standard 9 1/2"; 7 1/2" and 8 1/2" Options Available	DECK HEIGHT	Standard 41", Optional 39 1/2", 35", 33 1/2"
SUSPENSIONS	Tandem Fixed, Tandem with Front or Rear Sliding Axle, Tri-Axle Fixed		

B-TRAINS



DIMENSIONS

LENGTH	28' Lead & 32' Pull or 32' Lead & 28' Pull	COUPLER HEIGHT	Customer Spec. (Min. 46", Max. 52")
WIDTH	102" Overall	KING PIN	Customer Spec. (Typical 36" on Lead, 24" on Pull)
GOOSENECK WEB DEPTH	Standard 8 1/2"; Optional 7 1/2"		

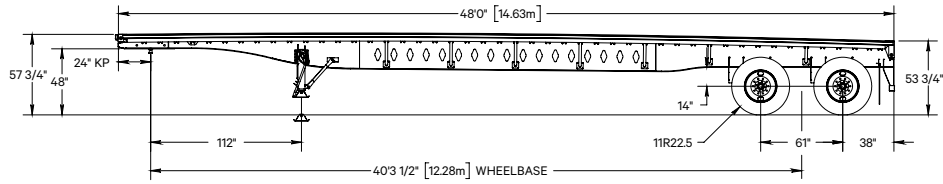
BODY STRUCTURE

BOLSTER - FRONT	Aluminum Extrusion with Four External Mount Stake Pockets; Other Options Available
BOLSTER - REAR	Flatbeds & Drop Decks - Aluminum Extrusion with Four Integral Stake Pockets, Standard B5500 Dock Bumpers; B-Trains - Formed Steel with Four Integral Stake Pockets on Lead; Extruded Aluminum on Pull; Other Options Available
BUMPER	Certified Rear Impact Guard - Meets or Exceeds all Transport Canada and US DOT Regulatory Requirements; Other Options Available
COUPLER PLATE	Standard 3/4"; Other Options Available
CROSSMEMBERS	4" Aluminum Extrusion @ 12" OC; Other Options Available
FLANGES	Grade 130 KSI High Tensile Steel, 3/8" or 1/2" x 5" Depending on Application
FLOOR	Standard 1 5/16" Fir; Other Options Available
KNEE BRACES	Aluminum Tubing @ 48" OC; Other Options Available
LIGHTING	Seven Wire Connector at Front; Truck-Lite LED Lighting Standard; Lifetime Warranty Lamps; Truck-Lite Wiring Harness; Other Options Available
LOAD SECUREMENT	Various Fixed or Sliding Winches, Barrel or Three-Bar Style, J-Hooks, and Others - All Tested to Meet Current Load Securement Regulations
MAIN BEAM PROFILE	Standard Cambered Design; Other Options Available
MUD FLAPS	Heavy Duty, Black Rubber, Anti-Spray, Anti-Sail
OTHER	Conspicuity Treatment - Complies with All Regulatory Requirements
PAINT	Three-Stage Paint Process Consisting of a Coating of Zinc, Urethane Primer and Top Coat
RUB RAIL	Aluminum Extrusion with Recess for Conspicuity Tape
SIDE RAIL	6" Aluminum Extrusion Channel on Platform; 7" on Step Deck; Other Options Available
STAKE POCKETS	Aluminum, External Mount, 48" Spacing, Two Pipe Spools between Pockets; Other Options Available
WEB	Grade 80 KSI High Tensile Steel in High Stress Locations, Grade 50 in Less Critical Areas

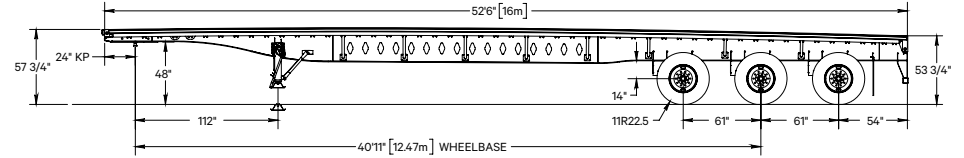
RUNNING GEAR

ABS BRAKES	Meritor Wabco, Various Configurations Available, All Meet Transport Canada Regulations
BRAKE DRUMS	Standard Cast, Outboard Mount; Other Options Available
BRAKE LINING	HXS-H23 Extended Service
HUBS	Standard Cast, Hub-Piloted, 10-Stud Unimount, Oil Lubricated; Other Options Available
KING PIN	Holland
LANDING GEAR	Holland Mark V with 2-Speed Gear Drive; Other Options Available
SLACKS	Haldex S-ABA
SUSPENSION & AXLES	Hendrickson INTRAAX; Other Options Available
TIRES	Wide Range of Michelin, BF Goodrich and Bridgestone Products Available
WHEEL SEALS	National
WHEELS	Standard White Steel; Other Options Available

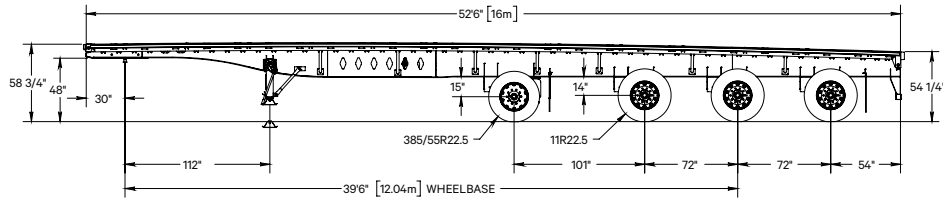
48' TANDEM



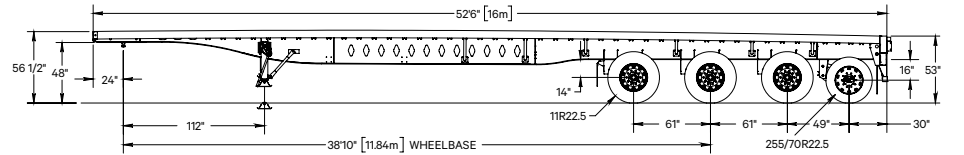
53' TRI-AXLE



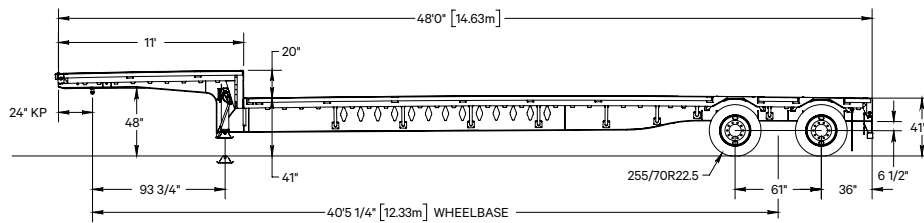
53' QUAD STEERABLE ONTARIO SPIF



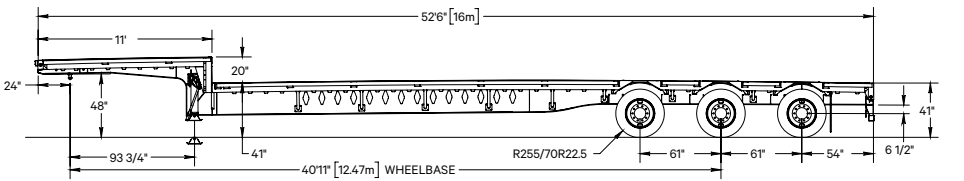
53' WEST COAST QUAD



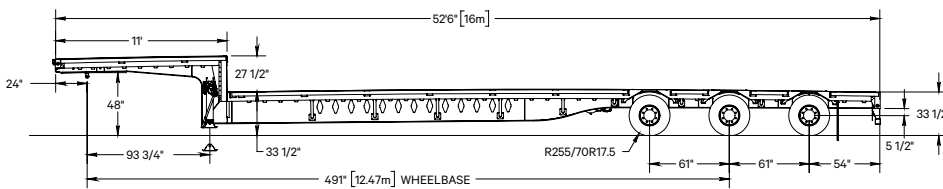
48' TANDEM



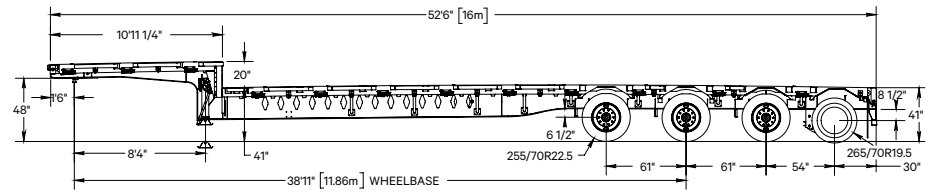
53' TRI-AXLE



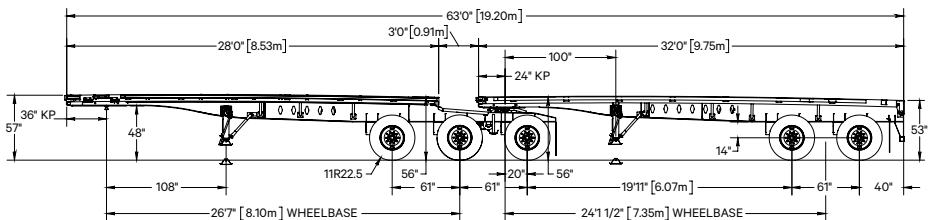
53' TRI-AXLE LOW DECK



53' QUAD



28' LEAD & 32' PULL



32' LEAD & 28' PULL

